



DDSG Blue Danube

MS ADMIRAL TEGETTHOFF

www.ddsg-blue-danube.at
+43 1 588 80



all information
incl. 360°-Tour

THE CHARTER SHIP FOR GRAND CELEBRATIONS

The MS Admiral Tegetthoff fulfills all the desires of an exclusive cruise. In addition to regular and themed cruises, the ship is perfectly suited for presentations, seminars, celebrations, and parties of all kinds.

As Austria's most famous charter ship, it is equipped with LCD screens, a well-thought-out lighting concept, and an elegant interior. The spacious and covered sundeck completes the ship experience, with the area furnished with comfortable lounge furniture and a bar being particularly inviting for relaxation.



length
63,4 m



width
9,88 m



depth
1,5 m



construction year / shipyard
1987 / Linz



performance
2x 650 HP



speed
22,5 km/h



engines
12-cylinder-4-
stroke-V-engines



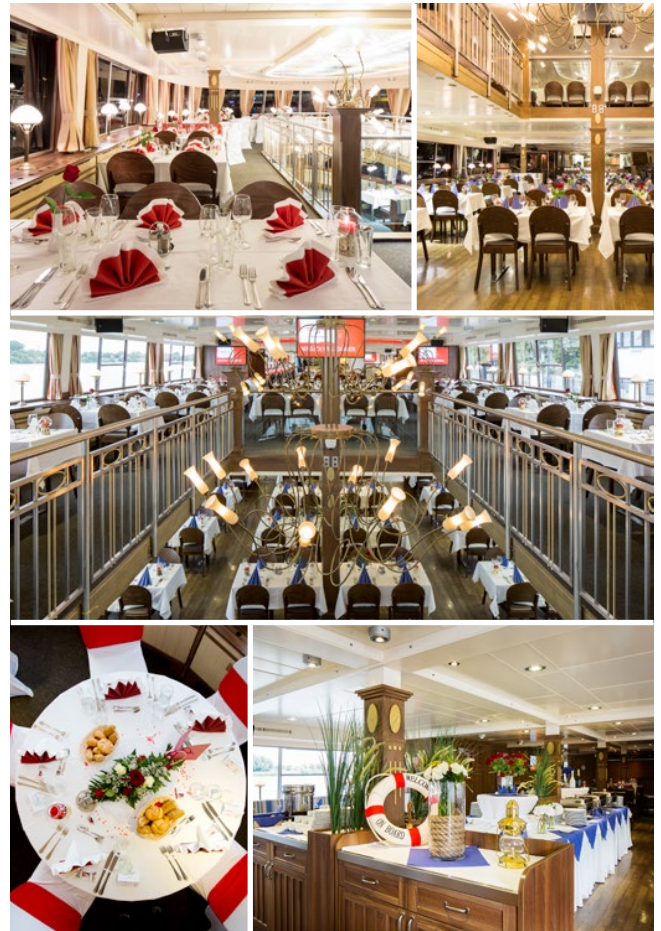
water tank
10 m³



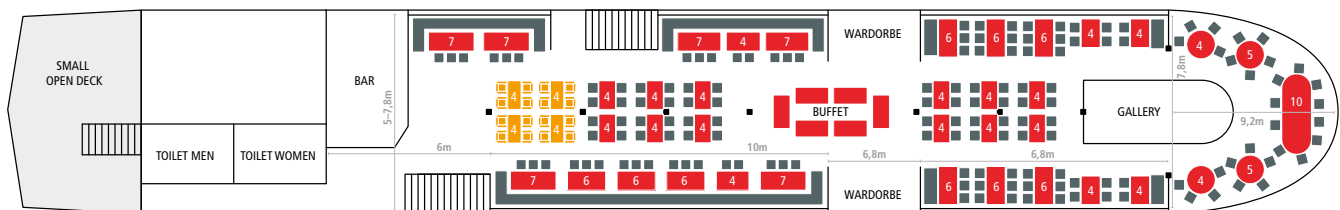
diesel tank
15 m³

FACILITIES

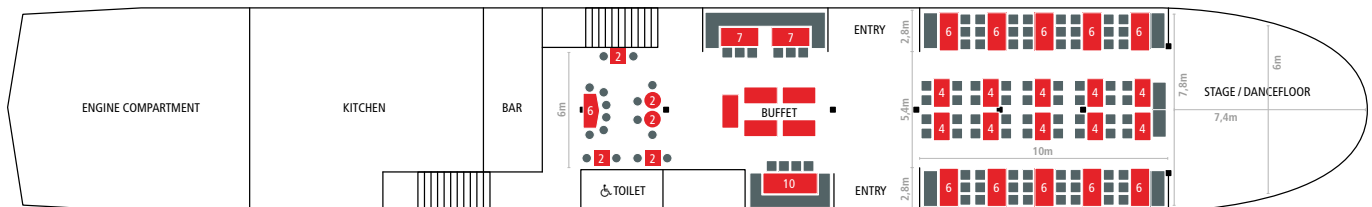
- › Restaurant
- › Cristal clear sound-system with wireless microphone and wired microphone at the open deck
- › Video-system and live-camera
- › LCD screens for presentations and stage broadcast
- › Open deck, covered, partly with lounge furniture
- › Stage / dance floor
- › Beamer and screen in the entrance area
- › Sun awning at the entrance, gallery with view on the dance floor on the main deck
- › Handicapped accessible facilities (toilet and elevator to the upper deck)
- › Air conditioning
- › Free WiFi



MS ADMIRAL TEGETTHOFF UPPER DECK WITH BUFFET



MS ADMIRAL TEGETTHOFF MAIN DECK WITH BUFFET



! Illustrations not to scale!

Seating arrangement	Main deck	Upper deck	Total
Event with buffet and dance floor	100	200	300
Event with buffet, without dance floor	100	200	300
Cinema seating*	120	0	120
Sightseeing cruises with à la carte service	148	232	380

Maximum capacity depending on the arrangement of seating.

*For cinema seating, the tables are pushed to the windows, which means no additional costs for you for the temporary storage of the furniture.